

QDS Fleet Management

Live Vehicle Tracking Has Evolved.

The USFT PT-X5 (TTK)



Features:

- Transmits its location every **20 feet if walking, 10 seconds if driving**
- Small— just 2.28"W x 3.9"L x 0.90" D
- NO external antenna
- Internal rechargeable Li-Ion battery for up to **10 Days** of 10s updates!
- 100% Web-based—no software to install - accessible from anywhere
- Virtual Fence and Speed Alert notifications by e-mail or text message
- Internal motion sensor extends battery life!
- Small. Fast. No wires. Unlimited possibilities

Personal Tracking at the speed of **LIVE.**

Tracking technology has changed at the most fundamental of levels.

In a word, the technology has *evolved*.

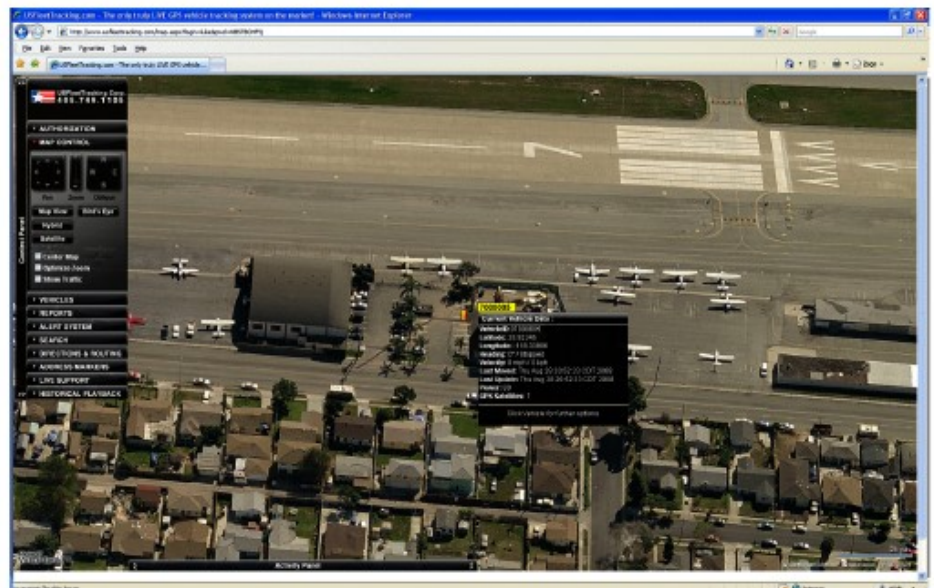
Introducing the USFT PT-X5 :
Truly LIVE tracking, updating every **10 seconds** for up to **10 days** on a single battery charge.

With the USFT PT-X5, you can watch in **REAL TIME** as the person walks or drives. Every move is recorded, so you can play it back up to 90 days later.

This is **NOT** a ping-based product, and there are **NO** 2-minute updates. In fact, it's not even a 1-minute update.

It's truly *LIVE*.

- Fastest updates in the industry
- Lowest cost of operation per update
- Unparalleled reliability
- For fleets of 1 to 3000 devices



QDS Workforce Management Interface:

Tasks Displayed on Map
Tasks by Technician in Map View

Flat-rate unlimited use service for just **\$39.95 per month.**

* (10-second updates)



Distributed by:



319-363-5508 | www.quintrex.com
505 33rd Avenue SW Cedar Rapids, IA 52404

Detailed Specifications

Dimensions	2.28"W x 3.90"L x 0.90"D
Operating Temperature	-30 degrees C to +70 degrees C (-22F to +158F)
Power Source	3.7V 1340mAh Rechargeable Lithium-Ion Battery, Wall Charger, USB charger, Optional 12v cigarette-lighter adapter
Typical full-power current	150mAh during transmission, <1mA at rest
GSM Channels	850/1900 (United States) 900/1800 (Europe, Australia, Asia, & Middle East)
Communication Protocol	TCP/IP, UDP, SMS
Update Frequency	Once every 20 feet if speed < 10mph, every 10 seconds if speed > 10mph
Antenna	Quad band GSM/GPRS+GPS, integrated into device
Notifications	Virtual Fence alert zones, speed alerts via SMS text message or email
Historical Playback	90 days of historical playback stored at server
Reporting	Individual Vehicle Report, Enhanced Vehicle Report, Start/Stop Report, and more ...
Diagnostics	Diagnostics via blinking LED, SMS, or TCP diagnostic messages
Applications	Fleet/Personnel Management, Covert Tracking, Theft Notification & Recovery, Dispatch, Driver Communication, Destination Routing with turn-by-turn, Tracking Alzheimer's Patients, Tracking teens, Asset Tracking, Freight Tracking



The USFT PT-X5 Device



The USFT PT-X5 Device