

BUSINESS INTELLIGENCE & DATA ANALYTICS MANAGEMENT

Creating custom, detailed reports is just a matter of click, click, click

Comprehensive reporting capabilities are a necessity in today's communications industry. Whether they are internal or regulatory in nature, Quintrex provides access to data throughout its system with a variety of tools. From program level reporting and Excel Reports & Extracts to the Dashboard Viewer and Data Mining & Reports Generator, you have the means to easily create and save custom reports on any data stored within the Quintrex system.

Data Mining & Reports Generator

Using the Data Mining & Reports Generator, customized, detailed reports can be created within minutes! With an easy-to-use interface, this program allows users of all ability levels to create reports from any file stored within the QDS database. Regardless of the user's knowledge of writing queries or SQL statements, this program allows novice report builders to access data as easily as the most experienced SQL writers.

Reports can be exported or e-mailed using any of nine different formats, including Excel, PDF and HTML. Drag-and-drop sorting & grouping as well as filtering capabilities afforded by the .NET Framework offer easy organization of data to best meet your needs.

Dashboard Viewer

The Quintrex Dashboard Viewer provides a single interface to display dynamic reports that are quickly accessible and easy to navigate. The Dashboard Viewer offers customization of your personal dashboard so you can view the information you want, in the way you want it.

The Desktop View can highlight multiple displays within one window. You can select which should be included to meet your individual needs. Additionally, you can dynamically position the displays and move them based on your preferences. As you add or

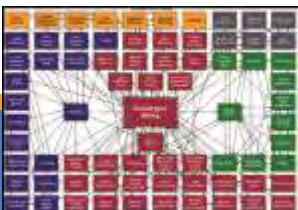
Business Intelligence & Data Analytics Management

- ▶ Data Mining & Reports Generator
- ▶ Dashboard Viewer
- ▶ Ad Hoc Marketing Reports
- ▶ Ad Hoc Database Query
- ▶ Excel Reports & Extracts
- ▶ Pre-Defined List Reports
- ▶ Program Reporting

remove them, the system automatically adjusts your view to optimize your display.

Ad Hoc Marketing Reports

The Quintrex Target Marketing application and its over 30 search parameters allow you to create ad hoc reports with only a few clicks. These reports provide detailed customer information and customer counts for those that meet the report criteria. This list of customers can then be exported to Excel and used for a variety of purposes. You can even run what-if scenarios for new product promotions and potential price increases to determine if they will be profitable prior to making a large marketing & time investment. From current services to customer demographics, these reports are designed to help you get the best marketing results possible.



Ad Hoc Database Query

Utilizing IBM's DB2 Web Query for System i, Quintrex offers the ability to query or build reports against any data stored in DB2 for System i databases through browser-based user interface technologies. Data can be delivered in multiple formats and advanced reporting functions such as ranking, color coding, drill-down and font customization can be used to enhance the visualization of data.

Excel Reports & Extracts

Utilizing an easy-to-install Microsoft Excel Add-in, Quintrex allows for Financial, CABS Trending and Churn Reporting within a user-friendly Excel interface. Through a simple criteria selection process, simply identify the data to extract from the Quintrex system and then have the ability to create custom reports in Excel. Additionally, detailed, pre-formatted churn reports can be created and saved to be used again and again. With the capability to save templates and update your information, reports can be created once and used by multiple personnel or

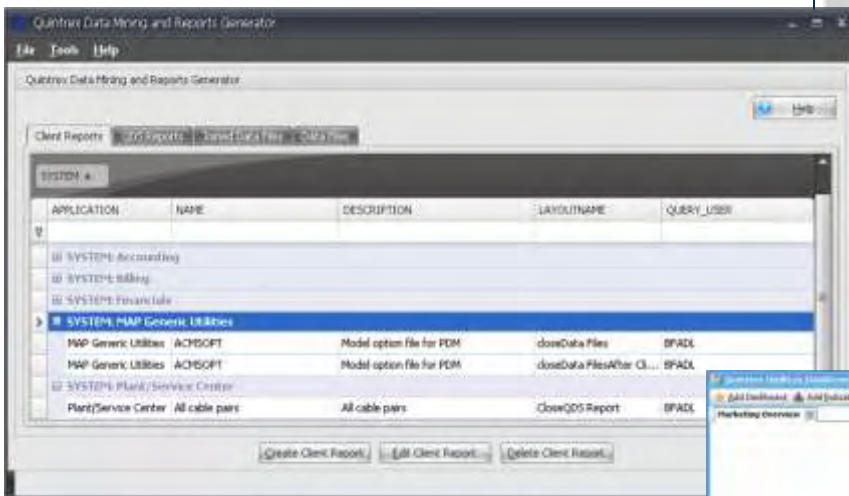
departments. Excel's graphing capabilities can also be utilized to create powerful visual representations of information.

Pre-Defined List Reports

Within the different Quintrex programs, you will find a variety of Pre-Defined List Reports. These list reports include detailed information in an easy-to-understand format that will help you better analyze your data for more informed decision making.

Program Reporting

Additional reports are available at the program level. These reports are built into programs within the different Quintrex modules and some run automatically as part of the day-to-day processing that takes place within these programs. Many are also available to be run on-demand to provide critical data for your operations.



| Month | Total | Monthly | Paid | Day 1 | Day 7 | Day 15 | Day 30 | Day 60 | Day 90 |
|-----------|-------|---------|------|-------|-------|--------|--------|--------|--------|
| Contract | 100 | 100 | 100 | 100 | 100 | 100 | 100 | 100 | 100 |
| S&S | 50 | 50 | 50 | 50 | 50 | 50 | 50 | 50 | 50 |
| Revenue | 200 | 200 | 200 | 200 | 200 | 200 | 200 | 200 | 200 |
| Follow-up | 10 | 10 | 10 | 10 | 10 | 10 | 10 | 10 | 10 |
| S&S Other | 5 | 5 | 5 | 5 | 5 | 5 | 5 | 5 | 5 |

